

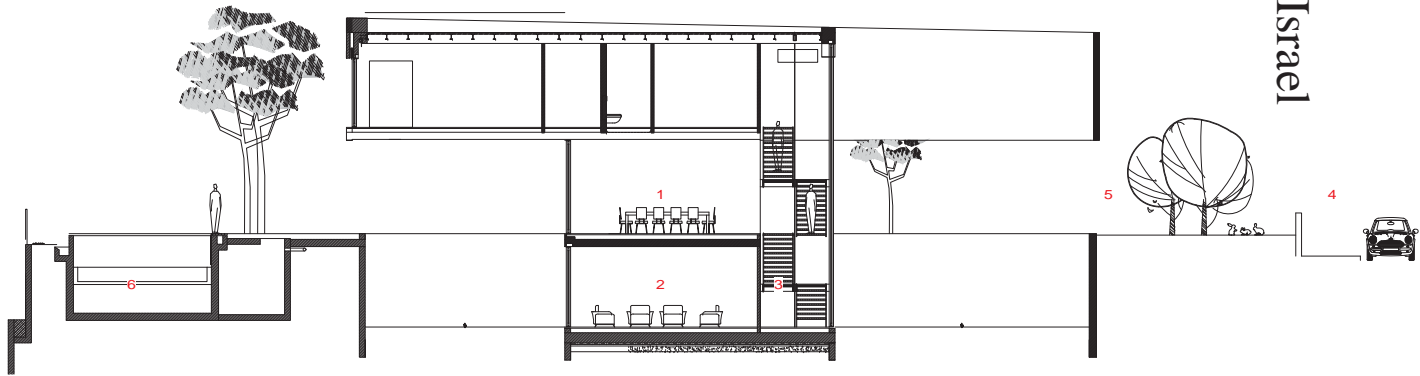
以色列海爾茲利亞 D3住宅

D3 House, Herzeliya Pituach, Israel

匹少·可鄧建築師事務所
Pisou Kedem Architects

設計：匹少·可鄧 艾琳·戈德堡
負責建築師：拉茲·梅拉梅德
燈光設計：歐力·阿弗隆·阿爾卡貝斯
Oryx圖書編號：·RENE GLOBER-OBJECT
施工單位：Asaf Lupo Ltd.
空間性質：住宅
空間面積：670平方公尺
基地面積：1,000平方公尺
座落位置：以色列海爾茲利亞
採訪：劉湘怡
風格攝影：埃倫·貝斯奇拉
影像：阿米特·傑隆
文字：匹少·可鄧
整理：何芳慈

Design · Pisou Kedem · Irene Goldberg
In Charge Architect · Raz Melamed
Lighting Design · Ory Avron Alkabes
Oryx Library Design · RENE GLOBER-OBJECT
Contractor · Asaf Lupo Ltd.
Character Of Space · House
Total Floor Area · 670 m²
Site Area · 1,000 m²
Location · Herzeliya Pituach, Israel
Interview · Rowena Liu
Snyling For Photography · E-ti Buskila
Photos · Amit Geron
Text · Pisou Kedem
Collator · Finn Ho



剖面圖 SECTION A-A

- 1. 餐廳
 - 2. 起居區
 - 3. 樓梯間
 - 4. 車庫
 - 5. 前院
 - 6. 游泳池
- 1. dinning room
 - 2. lounge area
 - 3. staircase
 - 4. garage
 - 5. forecourt
 - 6. swimming pool

本案是一棟位於都市環境中的私人家庭住宅。住宅正面看來像是兩個大建築體組成的密封「盒」(Box)。其中一個橫向正面是滿佈著重複圖案的白色鋁牆，牆面以看似隨機的方式四處開孔，白天可以藉此從戶外一窺屋內，晚上則能過濾人造光源。上方的建築體外牆由清水混凝土構成，與下半部形成反差。為了營造飛起來的感覺，上方建築位於對角線上，並特別強調和白色穿孔鋁牆之間的對比。面街的圍牆簡約而洗鍊，突顯出建築師所想傳達的建築語言。而面街圍牆之所以突出就是因為它不張揚，因此成功創造出精準而俐落的外觀。白色鋁牆上的洞孔讓光影能夠穿透入內，為原本沉靜的空間創造了一首抒情而和諧的詩歌，光影彷彿舞動在建築的牆面間，為沉默的牆壁注入生命氣息。半三角形的圖案以及其看似隨意的間距，似乎為光線奏出舞動的韻律。在入口處一道分隔入口大廳和廚房的獨特石牆上，建築師進一步發揮這個三角元素，有時從二維角度觀看，就像是一個圖形標誌。此面巨大的牆壁本身就是一面鐵與天然石材組成的藝術作品，同時將設計主題從外觀延伸至屋內。其他立面是由大型落地窗構成，如此設計將整個花園引入屋內。地面層的透明設計強化了與二樓傾斜的混凝土建築之間的張力。住宅中間的大型天井在室內外之間形成一處有趣的交會點，為居住者進出屋內和中庭時提供了一個過渡空間。

A private family home located in an urban environment. The facade of the house is in fact a kind of sealed "box" composed of two large volumes. One horizontal facade is made up of a white aluminum skin with a repetitive graphic pattern in which, here and there, in a seemingly random way, cut-out openings allow a glimpse into the house during the day and the filtering out of artificial light at night. The upper volume is constructed of exposed architectural concrete to create a tension against the lower volume. Designed to create a sense of flight, the upper volume is positioned on a diagonal and emphasizes the contrast between it and the perforated white aluminum facade. The envelope facing the street forms a minimalistic and polished object that accentuates the monastic and condensed language chosen by the designer. The street-facing facade stands out because of its restraint, successfully fulfilling its purpose of creating a precise and sleek appearance. The perforation in the white aluminum envelope allows light and shadow to play through, creating in an otherwise calm space a lyrical and harmonious poetry that seemingly dances across the walls of the building and breathes life into the silent walls. The pattern of semi-triangles, and their seemingly random spacing, appear to epitomize the rhythm of the movement of light. The designer made further use of this pattern, seen sometimes at two-dimensional angles almost like a graphic logo, on the unique stone wall in the entrance which serves as a divider between the entrance hall and the kitchen. This massive wall, in its entirety, is crafted in an artistic mix of iron and natural stone and carries the design theme through from the exterior into the house. The other facades are built of huge fenestrations that allow the whole garden to penetrate into the house's spaces. The transparency of the ground floor strengthens the tension between it and the sloped mass of concrete on the second floor. A large patio at the center of the house forms an interesting meeting point between the internal spaces and the exterior, providing an interlude between being inside the house and the courtyard.

左頁：住宅正面體現以「盒」為主軸的建築概念





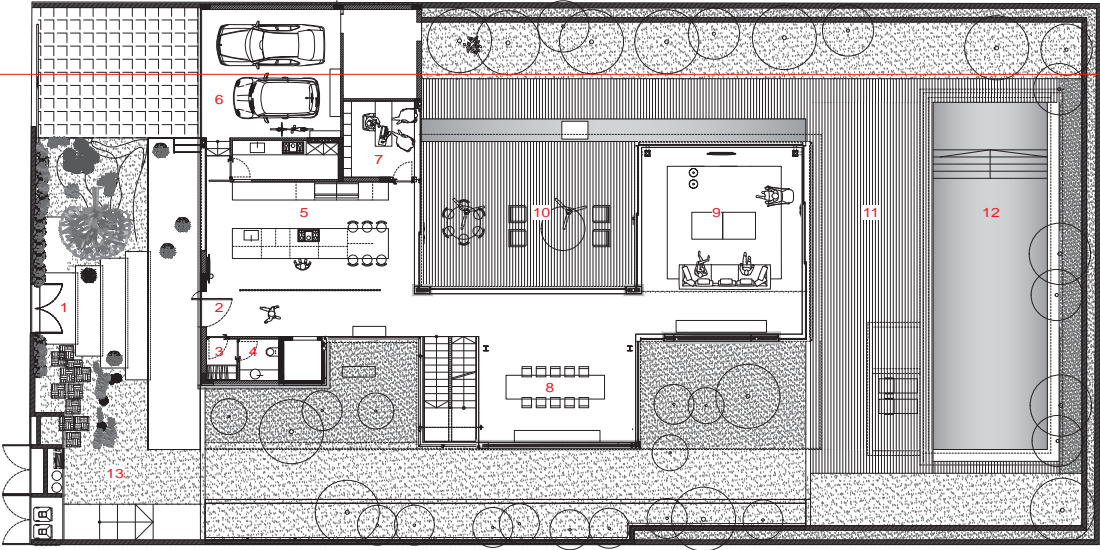
右頁・左頁：白色鋁牆重複圖形的三角鏤空
可以篩濾光線，也能令人一窺室內



1. 大門入口 2. 入口玄關 3. 衣帽間 4. 衛生間 5. 廚房 6. 車庫 7. 辦公室
8. 餐廳 9. 起居區 10. 挑空 11. 游泳池平台 12. 游泳池 13. 前院

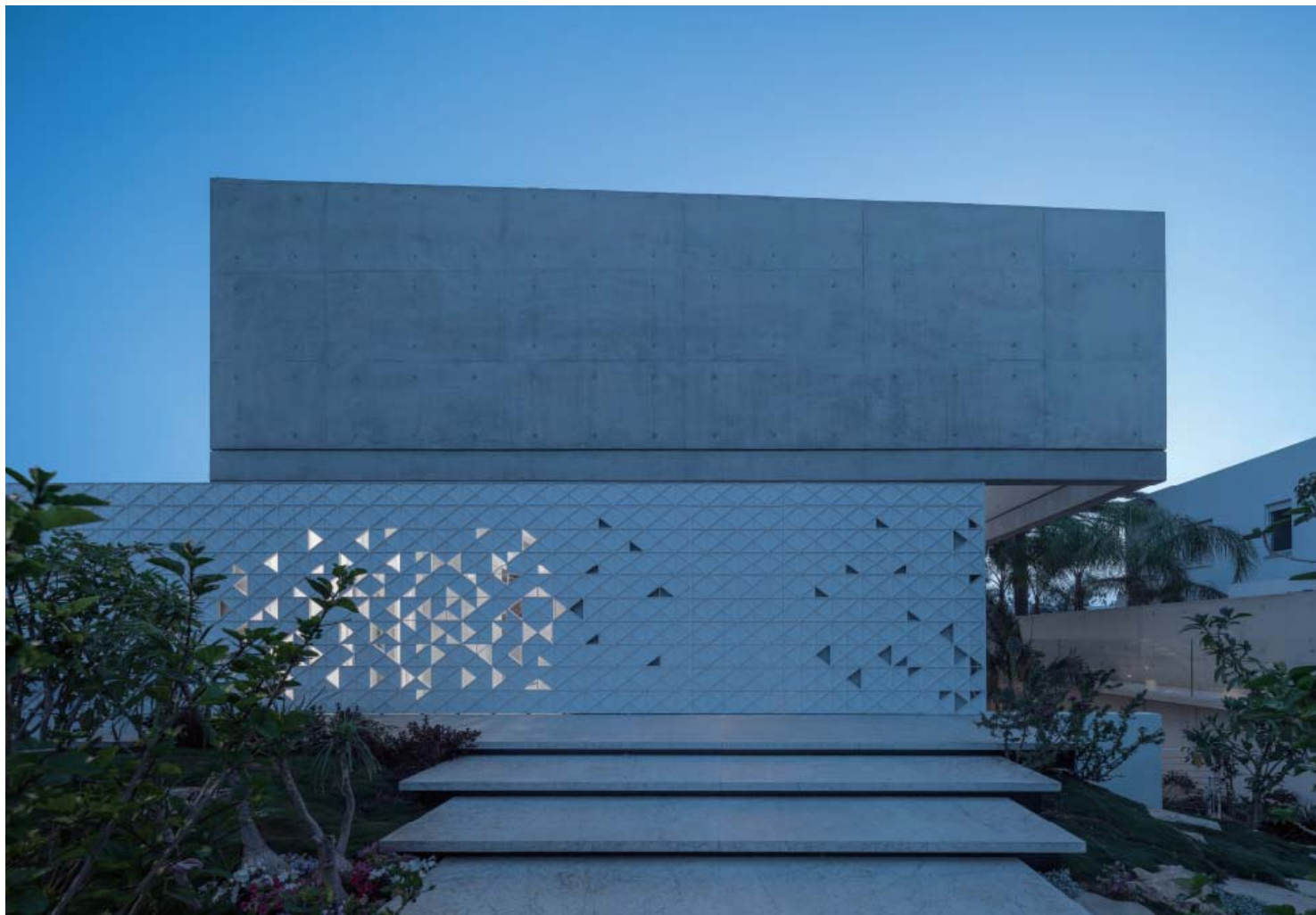
1. entrance 2. vestibule 3. coatroom 4. washroom 5. kitchen 6. garage 7. office 8. dining room
9. lounge area 10. void 11. pool deck 12. swimming pool 13. forecourt

地面層平面圖 GROUND FLOOR PLAN





右頁・左頁：建築師於住宅內若有似無的填入三角形元素，樓梯結構或壁櫃都能見其蹤影



右頁・左頁：部分立面以大型落地窗
構成，將花園造景導入室內